

WEST LAKE[®]
PREMIUM TRUCK TYRES

ZHONGCE RUBBER PRODUCED

TRUCK AND BUS TYRES

2014/2015 TYRE CATALOGUE



ZHONGCE RUBBER GROUP CO., LTD.

www.westlaketyre.com/eu



- A Company established in Year 1958
- No. 1 Tyre Manufacturer in China
- No. 10 of Top 75 Global Tyre Manufacturers in Year 2013
- Sale revenue reached USD4.88 billion in Year 2013

Zhongce Rubber Group Co., Ltd. (ZC-RUBBER) takes great pride in producing tyres that rate among the best in the world. Our corporate philosophy is all about collaboration with our suppliers, with over 10,000s of companies who sell our products around the world, and with our millions of end customers who trust our tyres every single day.

Our engineers are working together closely with our international Research and Development (R&D) team combined of Japanese and Korean experts. We keep on investing millions of US dollars in establishing various production and testing facilities such as the first noise test laboratory in China and the MTS Flat-Trac III CT Tyre Test

System. In 2012 and 2013, we joined and maintained the rank of the global top 10 tyre manufacturer.

Our belief in producing quality tyres makes us to set up quality control system approved by both global tyre manufacturers and the famous car makers such as VOLVO, introduce world latest production facilities from Fischer, VMI, Krupp, etc, and inspect every single tyre by hand before it leaves the production line besides the X-ray, balancing and uniformity inspection by most advanced equipments imported from Germany, Japan and U.S.A. We guarantee our tyre quality by system, facilities and employees' responsibility.

Manufacturing Bases				
Advanced Production Facility				
Strict Quality Inspection				
R&D center				



WESTLAKE TYRE FEATURES

- Special Tread design for each truck application
- Durability of tyres
- Strong tyre casing for retread
- Cool running tyres helping to save fuel
- Eco-friendly product and REACH conformity
- ISO 9001 certificated production

POSITION: *Trailer Axle*

WTL1

Long Haul Regional Urban Mixed Service



p 10

POSITION: *Steer Axle*

WSR+1

Long Haul Regional Urban Mixed Service



p 12

POSITION: *Steer Axle*

WSR1

Long Haul Regional Urban Mixed Service



p 13

POSITION: *Drive Axle*

WDR+1

Long Haul Regional Urban Mixed Service

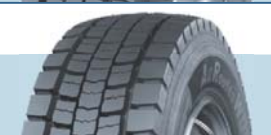


p 14

POSITION: *Drive Axle*

WDR1

Long Haul Regional Urban Mixed Service



p 15

POSITION: *Trailer Axle*

WTR1

Long Haul Regional Urban Mixed Service

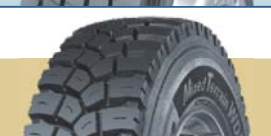


p 16

POSITION: *Drive Axle*

WDM1

Long Haul Regional Urban Mixed Service



p 18

POSITION: *Trailer Axle*

WTM1

Long Haul Regional Urban Mixed Service



p 19

POSITION: *Trailer Axle*

WTX1

Long Haul Regional Urban Mixed Service



p 21

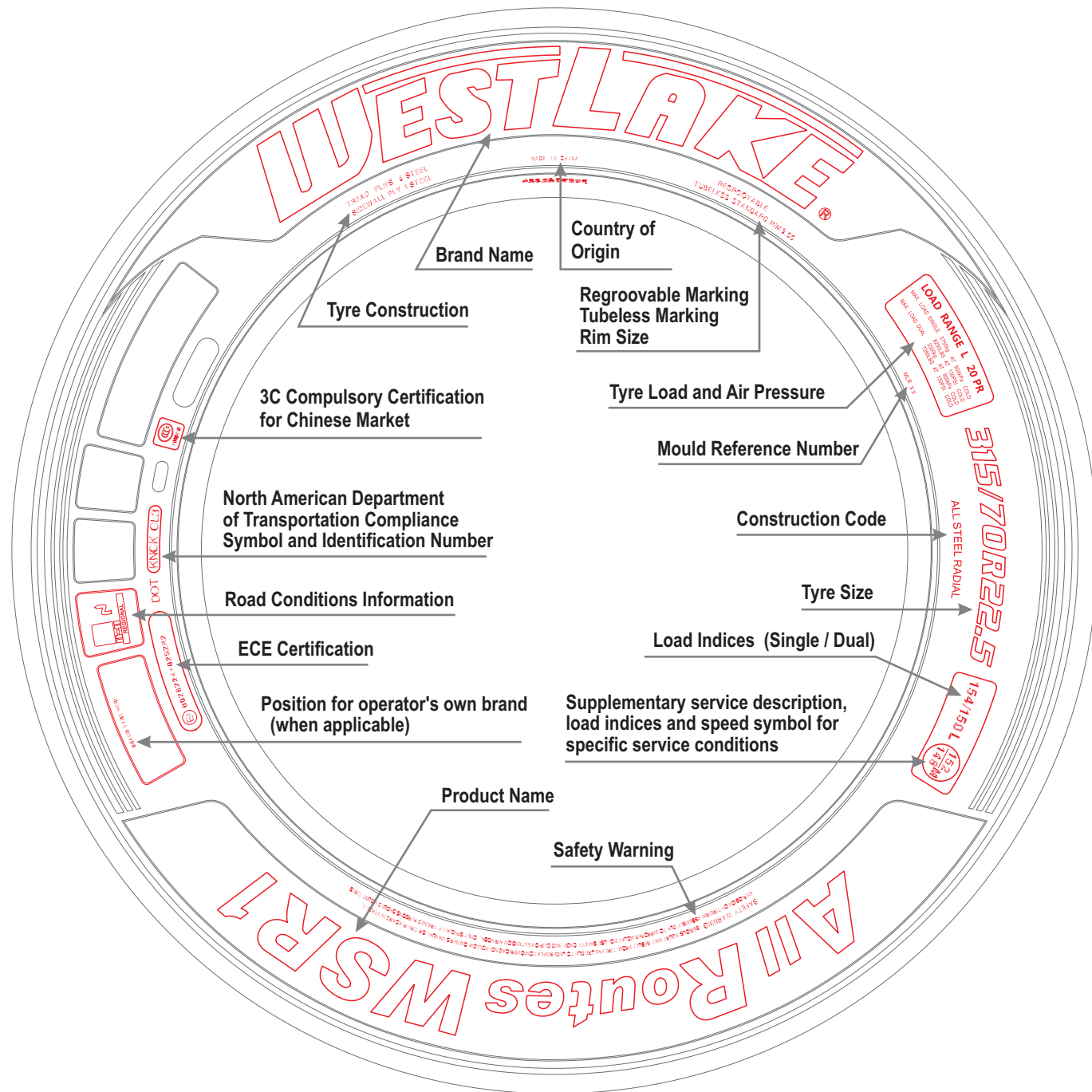
APPLICATION AND KEY FEATURE LEGEND

- | | | | |
|---|--|--|--|
| L Long Haul
(Long Run) | | | <ul style="list-style-type: none"> • Long distance journey with constant speed and less braking and accelerating • Excellent paved road condition with less curves • Less fuel consumption and comfortable ride • High mileage performance |
| R Regional
(All Routes) | | | <ul style="list-style-type: none"> • Short to middle distance journey with frequent braking, accelerating and turning • Good paved road with many curves and unexpected rough conditions • Challenging road conditions in winter with snow and ice |
| U Urban
(Urban Master) | | | <ul style="list-style-type: none"> • Frequent speed changes, constant turnings and frequent maneuvers • Resistance to curb impact on tyre sidewall • Excellent road grip and durable high mileage |
| M Mixed Service
(Mixed Terrain) | | | <ul style="list-style-type: none"> • Used both on and off road with expected aggressive, sharp-edge or muddy road condition • Heavy loads and outstanding durability at slow speed and constant stopping • Special protection against the damage caused by the road condition |

TYRE SIDEWALL INSTRUCTION

A series of internationally used numbers and codes exist for the identification of tyre structures, dimensions and main applications as well as the producer information.

This group of codes and numbers is collectively known as the "tyre markings" and permits a precise identification of the tyre. The picture below gives an example of the tyre markings as they appear on a tyre.



TECHNOLOGIES FOR TYRES WITH THE VALUE

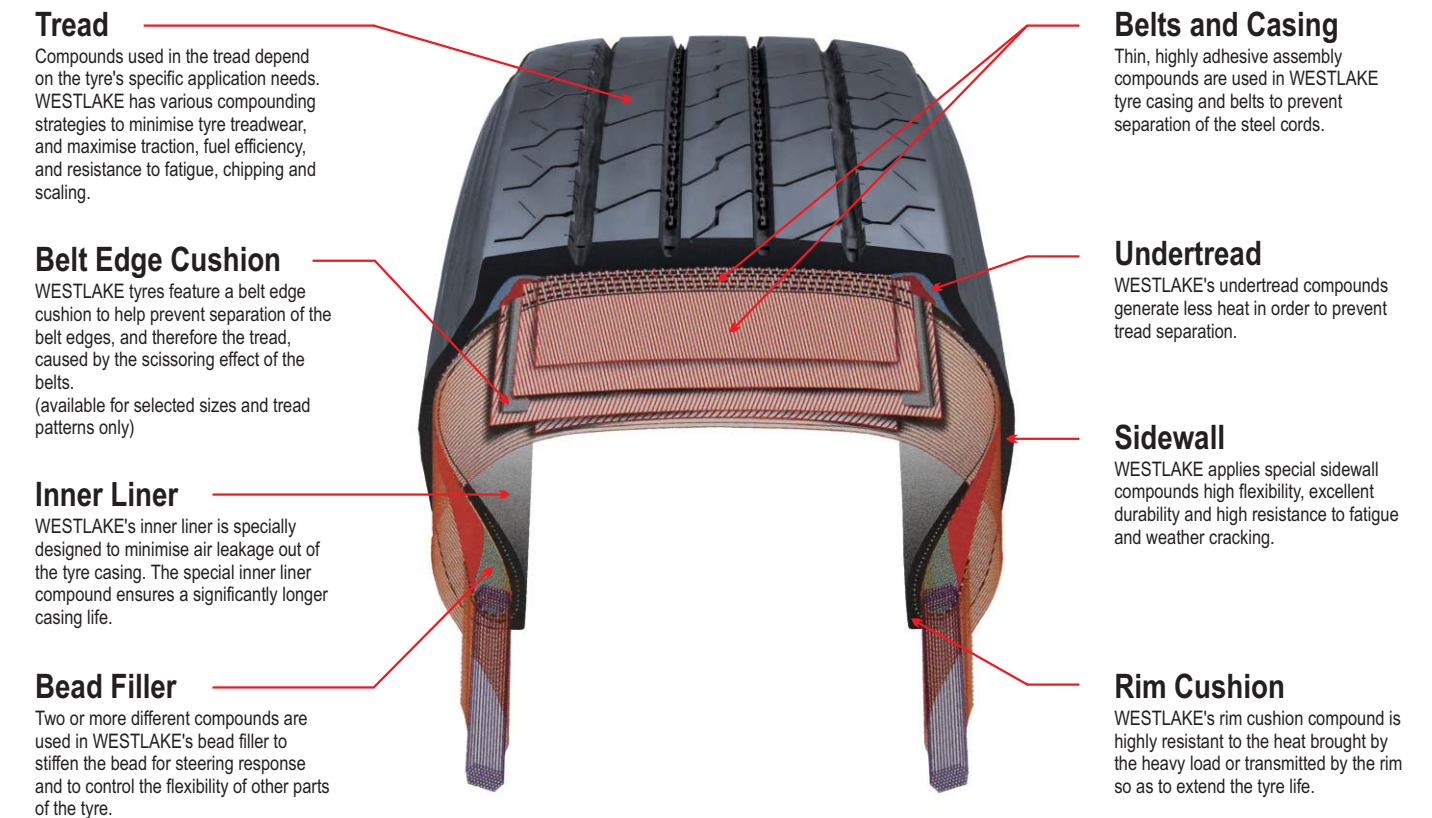
Westlake is constantly striving to create the best solutions for each application. WESTLAKE's commitment to you and to the environment ensures cost-effective quality tyres.

WESTLAKE's Concept

Westlake provides tyres with longer mileage, greater retreadability, more durability and less fuel consumption, in one word, more value, to fleets in Europe.

Given the extreme demands of today's transport industry, Westlake investment on continuous innovation in tyre technology is essential and helps the fleets who seek for tyre value and cost saving.

Tyre Construction



Proposal Segment Name & Profil Name

WSR1

W → WESTLAKE

S → Steer
D → Drive
T → Trailer

L → Long Run
R → All Routes
M → Mixed Terrain
X → Low Loader

1 → Product Version

WESTLAKE: YOUR SMART INVESTMENT

Recommendations to ensure the top performance of your WESTLAKE tyres.

Inflation Pressure

Truck tyres for commercial vehicles must be properly inflated to a pressure based on the load, speed and conditions of use for maximum performance in all aspects such as even wear (long mileage), traction and handling stability (riding comfort) in addition to safety issues*.

*Check WESTLAKE's recommendations of PRODUCT TECHNICAL DATA at page 23-24 of this catalogue.

CORRECT INFLATION	UNDERINFLATION	OVERINFLATION
maintains even road contact for maximised performance.	causes abnormal tyre deflection, which builds up excessive heat, and risk of failure. It also causes excessive wear on the shoulder.	increases the risk of impact breaks and other road hazard damage. It also causes excessive wear in the centre.

Tyre pressures should be checked on cold tyres at least every two weeks, using a calibrated pressure gauge. Tyres with lower profiles must be checked strictly due to their less visible sidewall deflection. WESTLAKE provides inflation pressure stickers (shown as the right) with several different values for certain applications to help customers maintain proper pressures. Please contact your WESTLAKE distributor for details.

850/8.50/124
 kPA Bar PSI
WEST LAKE TRUCK & BUS TYRES

Retreading

Every new WESTLAKE truck tyre product is designed and constructed for better retreadability. Please consult your WESTLAKE distributor for details.

Regrooving

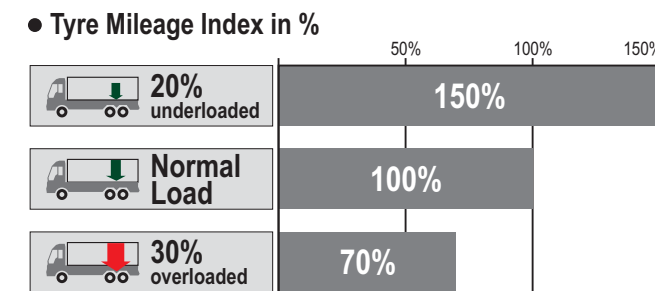
Regrooving must be undertaken when only between 2 to 3 mm of the original tread pattern remains, in accordance with WESTLAKE's recommendations in this catalogue.

Tyre Wear Factors

FUEL ECONOMY & THE ENVIRONMENT

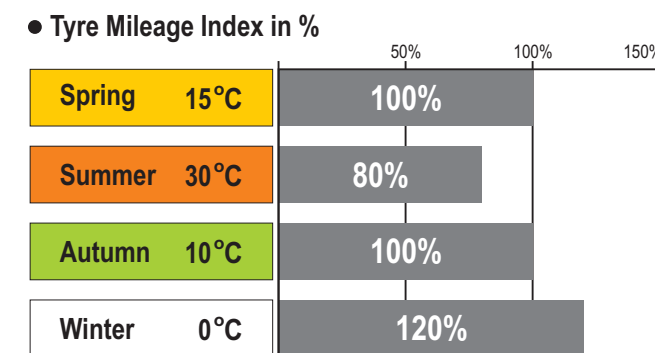
These tables indicate factors of tyre wear. If all factors are taken into consideration and applied correctly according to your vehicle and situation, it will result in best fuel efficiency and help for the protection of our environment. Please contact your WESTLAKE distributor for more details.

CARRYING LOAD



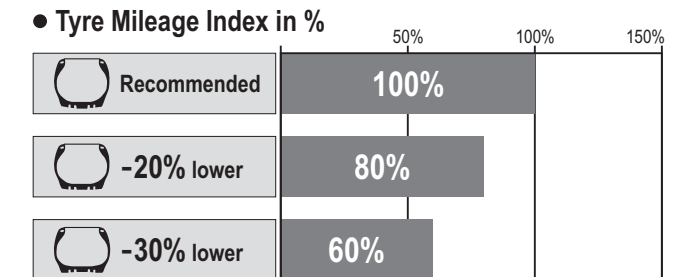
Tyre wear depends upon the load carried. WESTLAKE recommends carrying the pay loads on correct axles and carry heavy load on drive axle position if applicable.

SEASONAL / AMBIENT TEMPERATURES



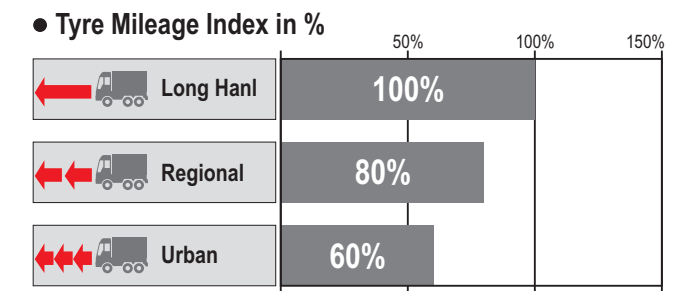
Tyre wear is temperature dependent. WESTLAKE recommends carrying out a tyre service before the summer season.

INFLATION PRESSURE



The proper inflation pressure is essential for the tyre performance for every application. WESTLAKE recommends frequent inflation checking. If necessary increase tyre inflation as per the recommendation of load and inflation PRODUCT TECHNICAL DATA or inflation stickers.

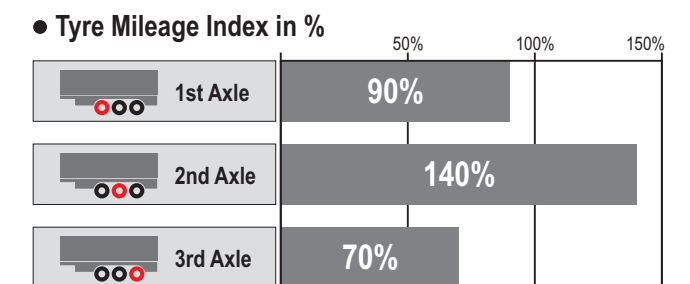
STOP AND ACCELERATION OPERATION



Rapid or frequent stop and acceleration traffic results in additional tread wear to tyres and reduce the tyre life.

WESTLAKE recommends mild steering & braking especially while turning or curving in daily use. Furthermore new products with special tread and enhanced sidewall will be developed for city operation with more frequent "stop and go" situation.

TRAILER AXLES



Trailer tyre wear is dependent on the side force of the axles of trailers. WESTLAKE recommends proper tyre rotation when utilizing retreaded tyres.



L Long Haul
(Long Run)



R Regional
(All Routes)



L Long Haul
(Long Run)



- Long distance journey with constant speed and less braking and accelerating
- Excellent paved road condition with less curves
- Less fuel consumption and comfortable ride
- High mileage performance

R Regional
(All Routes)



- Short to middle distance journey with frequent braking, accelerating and turning
- Good paved road with many curves and unexpected rough conditions
- Challenging road conditions in winter with snow and ice



WTL1

Long Run / Trailer Axle

New wide base trailer tyre with WESTLAKE's latest technology for long haul application.

- 5-Rib tread design enhances longer mileage.
- Computer designed tyre structure provides excellent footprint profile and ensures superior comfort and even wear.
- Special tread compound guarantees less fuel consumption with lower rolling resistance.
- Stone ejectors in U-shape grooves minimize the stone holding and penetration.

SIZE	SERVICE INDEX				NOISE (dB)
385/55 R 22.5	160K(158L)	B	C	2	71
385/65 R 22.5	158L(160K)	C	C	2	71
385/65 R 22.5	160K(158L)	C	C	2	71





L Long Haul
(Long Run)



R Regional
(All Routes)



U Urban
(Urban Master)



M Mixed Service
(Mixed Terrain)



L Long Haul
(Long Run)



- Long distance journey with constant speed and less braking and accelerating
- Excellent paved road condition with less curves
- Less fuel consumption and comfortable ride
- High mileage performance

R Regional
(All Routes)



- Short to middle distance journey with frequent braking, accelerating and turning
- Good paved road with many curves and unexpected rough conditions
- Challenging road conditions in winter with snow and ice

U Urban
(Urban Master)



- Frequent speed changes, constant turnings and frequent maneuvers
- Resistance to curb impact on tyre sidewall
- Excellent road grip and durable high mileage

M Mixed Service
(Mixed Terrain)



- Used both on and off road with expected aggressive, sharp-edge or muddy road condition
- Heavy loads and outstanding durability at slow speed and constant stopping
- Special protection against the damage caused by the road condition



WSR⁺1

All Routes / Steer Axle

New steer tyre engineered with innovative WESTLAKE's latest technology for local and regional operations with rims of 17.5" and 19.5" .

- Computer designed 5-Rib tread provides precise handling.
- Tread sipes alongside tread grooves offer outstanding wet operation and even tread contact on road surface.
- Advanced tyre casing design promises good footprint and avoids uneven wear.

SIZE	SERVICE INDEX				NOISE (dB)
205/75 R 17.5	124/122M(126/124G)	D	D	2	72
215/75 R 17.5	126/124M	D	D	2	72
225/75 R 17.5	129/127M	D	D	2	72
235/75 R 17.5	130/128M(132/130L)	D	D	2	72
245/70 R 19.5	136/134M	D	D	2	72
265/70 R 19.5	140/138M	D	D	2	72





WSR1

All Routes / Steer Axle

New steer tyre engineered with innovative WESTLAKE's latest technology for long haul and regional operations.

- Advanced 5-Rib tread provides even wear and remarkable handling.
- Special designed tread pitches ensure low external noise.
- Tread sipes with straight tread grooves guarantee excellent water drainage and outstanding wet traction.
- Computer designed tyre casing promises good footprint to extend tyre life.

SIZE	SERVICE INDEX				NOISE (dB)
295/80 R 22.5	152/149M	D	C	2	71
315/70 R 22.5	154/150L	C	C	2	71
315/80 R 22.5	154/152M	C	C	2	71
385/65 R 22.5	158L(160K)	C	C	2	71
385/65 R 22.5	160K(158L)	C	C	2	71



WDR+1

All Routes / Drive Axle

New drive tyre designed for long haul and regional application with rims of 17.5" and 19.5".

- Deep tread depth and wider tread with robust tread blocks ensure outstanding traction on both dry and wet road surface.
- Excellent footprint design promises even wear and remarkable tyre life.

SIZE	SERVICE INDEX				NOISE (dB)
205/75 R 17.5	124/122M	E	D	2	74
215/75 R 17.5	126/124M	E	D	2	74
225/75 R 17.5	129/127M	E	D	2	74
235/75 R 17.5	130/128M(132/130L)	E	D	2	74
245/70 R 19.5	136/134M	E	C	2	74
265/70 R 19.5	140/138M	E	C	2	74





WDR1

All Routes / Drive Axle

New drive tyre designed for long haul and regional application.

- Deep tread depth ensure longer tyre life.
- Directional tread pattern and robust tread blocks produce outstanding traction on both dry and wet road surface.
- Excellent footprint design promises even wear and remarkable tyre life.
- Special shoulder design with low-heating compound minimize shoulder heel & toe wear.

SIZE	SERVICE INDEX				NOISE (dB)
295/80 R 22.5	152/149M	E	C	2	74
315/70 R 22.5	154/150L	E	C	2	74
315/80 R 22.5	156/153L	E	C	2	74



WTR1

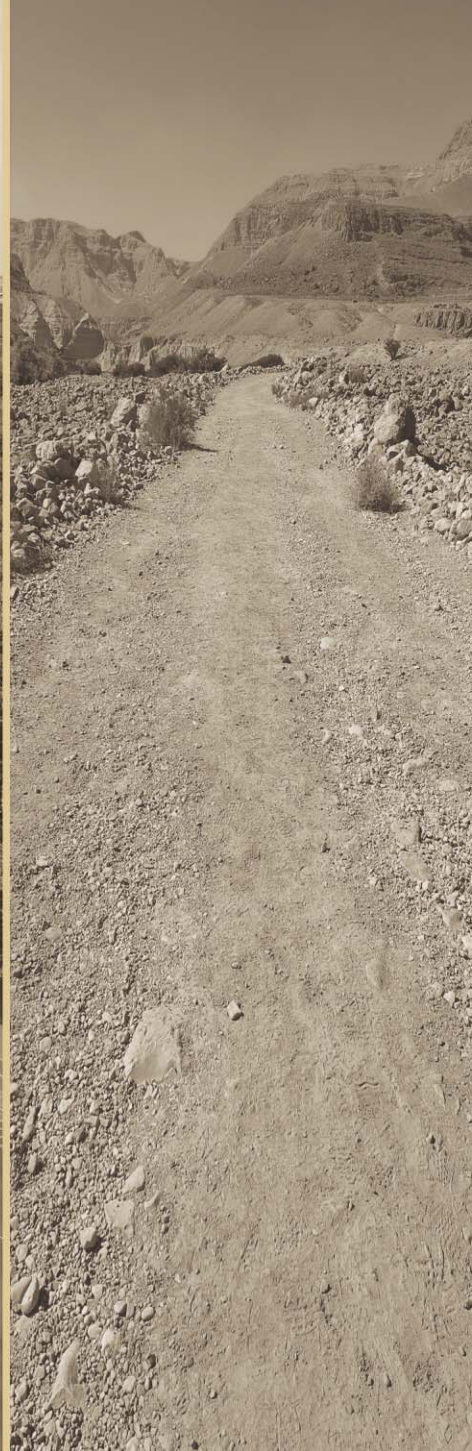
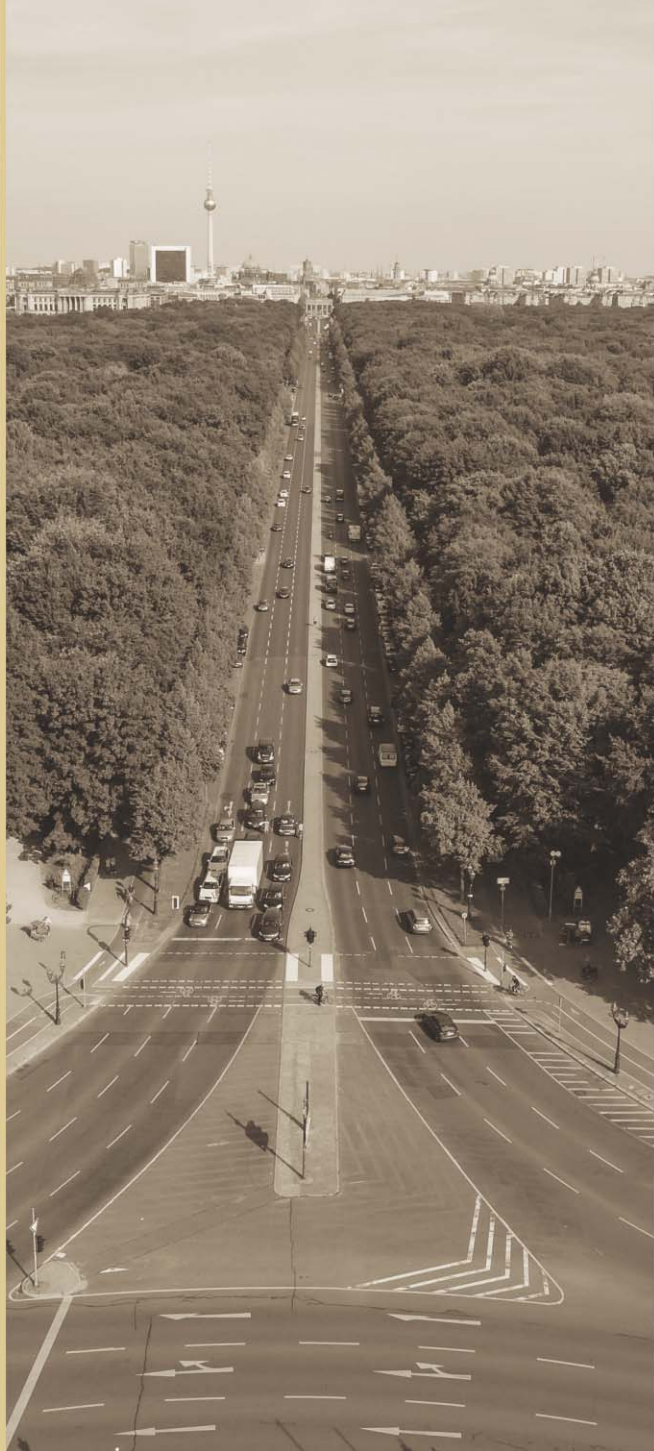
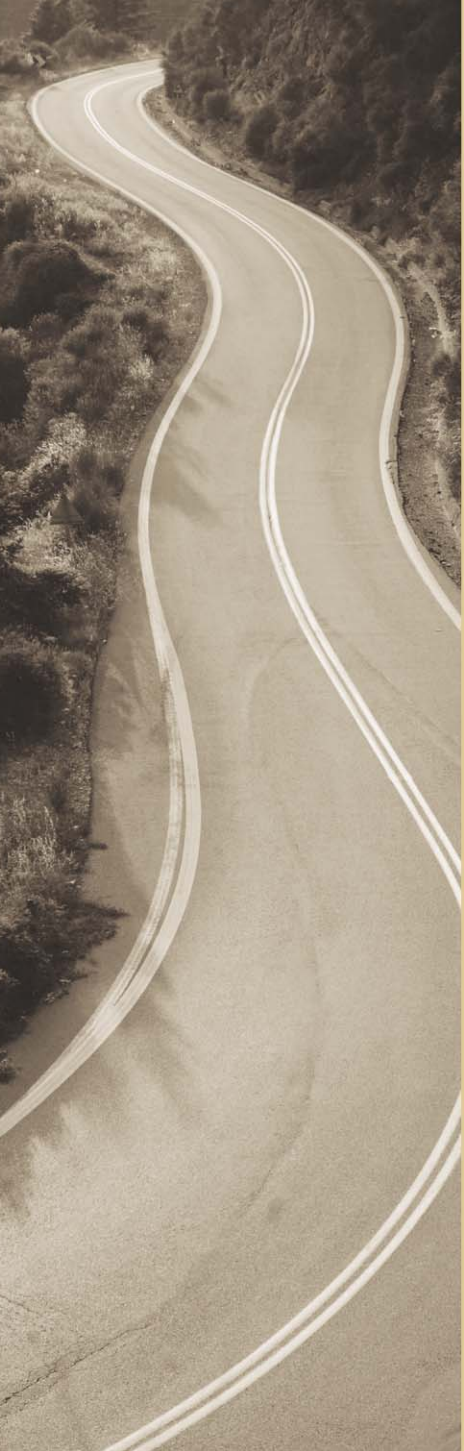
All Routes / Trailer Axle

New wide base trailer tyre with WESTLAKE's latest technology for long haul and regional application.

- 5-Rib tread and strong shoulder design provide excellent carrying capacity and longer tyre life.
- Computer designed tyre structure provides excellent footprint profile and ensures superior comfort and even wear.
- Special tread compound guarantees less fuel consumption with lower rolling resistance.
- Stone ejectors in U-shape grooves minimize the stone holding and penetration.

SIZE	SERVICE INDEX				NOISE (dB)
385/55 R 22.5	160K(158L)	B	C	2	71
385/65 R 22.5	158L(160K)	C	C	2	71
385/65 R 22.5	160K(158L)	C	C	2	71





R Regional
(All Routes)



U Urban
(Urban Master)



M Mixed Service
(Mixed Terrain)



WDM1

Mixed Terrain / Drive Axle

Premium tyre with latest WESTLAKE technology for on & off operation.

- Aggressive directional tread and open tread shoulder with robust tread blocks provide extra traction for On & Off application.
- Special tread compound promises better resistance to cuts and tearing.
- Enhanced sidewall structure minimizes unexpected damage from rough road condition.



SIZE	SERVICE INDEX				NOISE (dB)
295/80 R 22.5	152/149M	E	B	2	74
315/80 R 22.5	156/153K	D	B	2	74



R Regional
(All Routes)



- Short to middle distance journey with frequent braking, accelerating and turning
- Good paved road with many curves and unexpected rough conditions
- Challenging road conditions in winter with snow and ice

U Urban
(Urban Master)



- Frequent speed changes, constant turnings and frequent maneuvers
- Resistance to curb impact on tyre sidewall
- Excellent road grip and durable high mileage

M Mixed Service
(Mixed Terrain)



- Used both on and off road with expected aggressive, sharp-edge or muddy road condition
- Heavy loads and outstanding durability at slow speed and constant stopping
- Special protection against the damage caused by the road condition



R Regional
(All Routes)



U Urban
(Urban Master)



M Mixed Service
(Mixed Terrain)



WTM1

Mixed Terrain / Trailer Axle

Premium multi-service tyre for on & off operation.

- Aggressive tread pattern promises remarkable traction for On & Off application.
- Outstanding self-cleaning tread with stone ejector minimizes stone holding and penetration and ensures longer tyre life.
- Robust tread blocks and rugged sidewall casing allow heavy loads and resist casing penetration and damage.

SIZE	SERVICE INDEX				NOISE (dB)
385/65 R 22.5	160K(158L)	D	C	2	72



M+S



L Long Haul
(Long Run)



- Long distance journey with constant speed and less braking and accelerating
- Excellent paved road condition with less curves
- Less fuel consumption and comfortable ride
- High mileage performance

R Regional
(All Routes)



- Short to middle distance journey with frequent braking, accelerating and turning
- Good paved road with many curves and unexpected rough conditions
- Challenging road conditions in winter with snow and ice

U Urban
(Urban Master)



- Frequent speed changes, constant turnings and frequent maneuvers
- Resistance to curb impact on tyre sidewall
- Excellent road grip and durable high mileage

M Mixed Service
(Mixed Terrain)



- Used both on and off road with expected aggressive, sharp-edge or muddy road condition
- Heavy loads and outstanding durability at slow speed and constant stopping
- Special protection against the damage caused by the road condition

L Long Haul
(Long Run)



R Regional
(All Routes)



U Urban
(Urban Master)



M Mixed Service
(Mixed Terrain)



WTX1

MaX Load / Trailer Axle

New trailer tyres with advanced WESTLAKE technology for long haul and regional application.

- Strong computer designed tyre casing guarantees outstanding capacity for heavy loads and highway.
- Special sipes alongside tread ribs help to minimize heating for high speed running with heavy loads.
- Special tread compound provides higher fuel efficiency with lower rolling resistance without sacrificing tyre mileage.

SIZE	SERVICE INDEX				NOISE (dB)
205/65 R 17.5	129/127J(130/130F)	D	C	2	71
215/75 R 17.5	135/133J	D	C	2	71
235/75 R 17.5	143/141J(144/144F)	D	C	2	71
245/70 R 17.5	143/141J(146/146F)	D	C	2	71
245/70 R 19.5	141/140J	C	C	2	71
265/70 R 19.5	143/141J	C	C	2	71



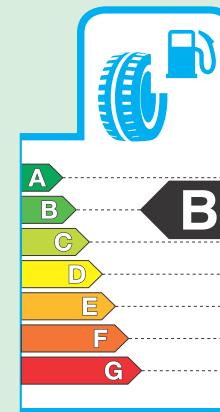
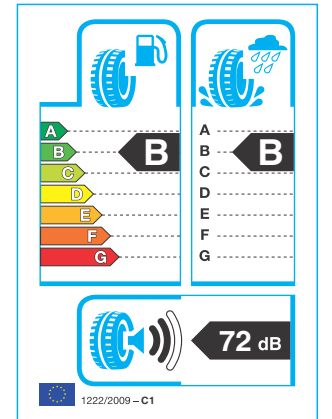
EU TYRE LABEL

In 2012 the European Union introduced a new tyre label, in order to provide standardised information on 3 specific performances; fuel efficiency, wet grip and external rolling noise.

Tyre labelling for passenger cars and light trucks took effect from November 2012, for tyres on sale in the EU under European Regulation (EC/No. 1222/2009) which were manufactured after 1 st July 2012.

The label is accompanied on the actual tyre and gives consumers useful information to assist them when purchasing new tyres.

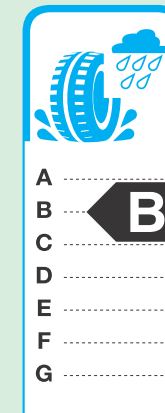
On the right you can find an example of the new EU tyre label. These graphics on the label are similar as those already used for household appliances and more recently new cars.



Rolling Resistance (Fuel Efficiency)

Rolling resistance is one of the main resistive forces on a vehicle, which acts as an opposite force to the direction in which the tyre is rolling. The rolling tyre deforms and dissipates energy. The tyre whose rolling resistance is greater, requires more fuel to move the vehicle forward. Therefore rolling resistance influences fuel consumption and the environment directly.

On the top left of the label, this shows 7 classes which range from A (most efficient) to G (least efficient), the grading indicates the tyre's contribution to fuel efficiency and CO₂ emissions.



Wet Grip (Braking Performance)

Wet grip is one of the most important safety aspects of a tyre. The tyres with excellent grip on wet surfaces have shorter braking distance when driving in rainy weather.

There are other important parameters which are also related to safety. However, consumers will be able to check and select for themselves their preferred performance.

On the top right of the label, wet grip is also expressed in classes ranging from A (highest performance) to G (lowest performance).



External Noise

Traffic noise is a major factor of nuisance and a very relevant environmental issue. On the lower part of the label, this indicates the level of exterior tyre noise from the vehicle (not the internal noise heard by the driver), expressed in decibels. The grading indicates the tyre's contribution to traffic noise and the environment. The label displays sound waves and corresponding levels ranging from 1 (least noise) to 3 (highest noise)

- 1 sound wave**
The best noise level performance. (3 dB below the future European limit*)
- 2 sound waves**
The average performance. (Already compliant with the future European limit*)
- 3 sound waves**
The weakest performance. (Compliant with the current European limit)

* The new European tyre external noise levels will be introduced by 2016



EU Tyre Label Icon Explanation

⊙ = Fuel Efficiency Class on Regulation (EC) No. 1222/2009 amended by Regulation (EC) No. 228/2011 and Regulation (EC) No. 1235/2011
 ◆ = Wet Grip Class on Regulation (EC) No. 1222/2009 amended by Regulation (EC) No. 228/2011 and Regulation (EC) No. 1235/2011
 ◀dB = External Rolling Noise Class and Measured Value (dB) on Regulation (EC) No. 1222/2009 amended by Regulation (EC) No. 228/2011 and Regulation (EC) No. 1235/2011

PRODUCT TECHNICAL DATA

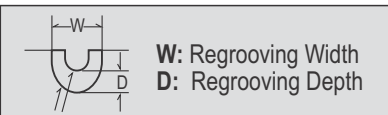


	SIZE	PATTERN	LOAD INDEX (ADDITIONAL LOAD)	OVERALL WIDTH (mm)	OVERALL DIAMETER (mm)	LOADED RADIUS (mm)	ROLLING (mm) CIRC. ±2%	MEASURING RIM (inch)	OPT. RIM (inch)	⊙ ● ◀ dB	SINGLE DUAL	LOAD CAPACITY (KG) AT RELATIVE AIR PRESSURE (kPa / Bar / PSI)																												
												WTL1		WSR+1		WSR1		WDR+1		WDR1		WTR1		WDM1		WTM1		WTX1												
												450	475	500	525	550	575	600	625	650	675	700	725	750	775	800	825	850	875	900	925	950								
Long Run																																								
Trailer	385/55 R 22.5	WTL1	160K(158L)	401	992	462	3006	12.25	11.75	B C 2 71	S							6200	6430	6670	6900	7140	7370	7600	7830	8070	8300	8500	8770	9000										
	385/65 R 22.5		158L(160K)	387	1072	494	3248	11.75	12.25	C C 2 71	S(158L)								6000	6250	6500	6750	7000	7250	7500	7750	8000	8250	8500											
			160K(158L)	387	1072	494	3248	11.75	12.25	C C 2 71	S(160K)								6000	6250	6500	6750	7000	7250	7500	7750	8000	8250	8500	8750	9000									
All Routes																																								
Steer	205/75 R 17.5	WSR+1	124/122M(126/124G)	205	753	353	2297	6.00	5.25/6.75	D D 2 72	S	2180	2260	2350	2430	2520	2600	2690	2770	2860	2940	3030	3110	3200	3300	3400														
	215/75 R 17.5			211	767	359	2339	6.00	6.75	D D 2 72	S	2260	2350	2400	2500	2600	2700	2800	2900	3000	3100	3200	3300	3400																
	225/75 R 17.5		129/127M	226	783	366	2388	6.75	6.00	D D 2 72	S	2480	2590	2700	2810	2920	3030	3140	3250	3370	3480	3590	3700																	
	235/75 R 17.5			233	797	372	2431	6.75	7.50	D D 2 72	S	2560	2670	2790	2900	3010	3130	3240	3350	3460	3580	3690	3800	3900	4000															
	245/70 R 19.5		136/134M	248	839	389	2559	7.50	6.75	D D 2 72	S			2980	3090	3210	3320	3440	3550	3670	3780	3900	4010	4130	4250	4360	4480													
	265/70 R 19.5			262	867	401	2644	7.50	6.75/8.25	D D 2 72	S			5520	5740	5970	6200	6430	6650	6880	7110	7340	7560	7790	8020	8250	8480													
	295/80 R 22.5		152/149M	298	1044	487	3184	9.00	8.25	D C 2 71	S								5100	5270	5430	5600	5760	5930	6090	6260	6420	6590	6760	6930	7100									
	315/70 R 22.5			312	1014	468	3093	9.00	9.75	C C 2 71	S								5100	5300	5500	5700	5900	6100	6300	6500	6700	6900	7100	7300	7500									
	315/80 R 22.5		154/152M	312	1076	500	3282	9.00	9.75	C C 2 71	S								9180	9500	9820	10140	10460	10780	11100	11420	11740	12060	12380	12690	13000									
	385/65 R 22.5			387	1072	494	3248	11.75	12.25	C C 2 71	S(158L)								6000	6250	6500	6750	7000	7250	7500	7750	8000	8250	8500											
			160K(158L)	387	1072	494	3248	11.75	12.25	C C 2 71	S(160K)						6000	6250	6500	6750	7000	7250	7500	7750	8000	8250	8500	8750	9000											
Drive	205/75 R 17.5	WDR+1	124/122M	205	753	353	2297	6.00	5.25/6.75	E D 2 74	S	2180	2260	2350	2430	2520	2600	2690	2770	2860	2940	3030	3110	3200	3300	3400														
	215/75 R 17.5			211	767	360	2339	6.00	6.75	E D 2 74	S	2260	2350	2400	2500	2600	2700	2800	2900	3000	3100	3200	3300	3400																
	225/75 R 17.5		129/127M	226	783	366	2388	6.75	6.00	E D 2 74	S	2480	2590	2700	2810	2920	3030	3140	3250	3370	3480	3590	3700																	
	235/75 R 17.5			233	797	373	2431	6.75	7.50	E D 2 74	S	2560	2670	2790	2900	3010	3130	3240	3350	3460	3580	3690	3800	3900	4000															
	245/70 R 19.5		136/134M	248	839	389	2559	7.50	6.75	E C 2 74	S			2980	3090	3210	3320	3440	3550	3670	3780	3900	4010	4130	4250	4360	4480													
	265/70 R 19.5			262	867	401	2644	7.50	6.75/8.25	E C 2 74	S			5520	5740	5970	6200	6430	6650	6880	7110	7340	7560	7790	8020	8250	8480													
	295/80 R 22.5		152/149M	298	1050	489	3203	9.00	8.25	E C 2 74	S								5100	5270	5430	5600	5760	5930	6090	6260	6420	6590	6760	6930	7100									
	315/70 R 22.5			312	1022	472	3117	9.00	9.75	E C 2 74	S								5100	5300	5500	5700	5900	6100	6300	6500	6700	6900	7100	7300	7500									
	315/80 R 22.5		156/153L	312	1082	506	3325	9.00	9.75	E C 2 74	S								9180	9500	9820	10140	10460	10780	11100	11420	11740	12060	12380	12690	13000									
				312	1082	506	3325	9.00	9.75	E C 2 74	S								5800	5990	6180	6370	6560	6750	6940	7130	7320	7500	8000											
Trailer	385/55 R 22.5	WTR1	160K(158L)	386	996	464	3018	12.25	11.75	B C 2 71	S							6200	6430	6670	6900	7140	7370	7600	7830	8070	8300	8500	8770	9000										
	385/65 R 22.5		158L(160K)	387	1072	496	3248	11.75	12.25	C C 2 71	S(158L)							6000	6250	6500	6750	7000	7250	7500	7750	8000	8250	8500												
			160K(158L)	387	1072	496	3248	11.75	12.25	C C 2 71	S(160K)							6000	6250	6500	6750	7000	7250	7500	7750	8000	8250	8500	8750	9000										
Mixed Terrain																																								
Drive	295/80 R 22.5	WDM1	152/149M	298	1050	489	3203	9.00	8.25	E B 2 74	S							5100	5270	5430	5600	5760	5930	6090	6260	6420	6590	6760	6930	7100										
	315/80 R 22.5		156/153K	312	1082	507	3331	9.00	9.75	D B 2 74	S							5800	5990	6180	6370	6560	6750	6940	7130	7320	7500	8000												
Trailer	385/65 R 22.5	WTM1	160K(158L)	387	1072	496	3248	11.75	12.25	D C 2 72	S(160K)							10200	10600	11000	11400	11800	12200	12600	13000	13400	13800	14600												
MaX Load																																								
Trailer	205/65 R 17.5	WTX1	129/127J(130/130F)	205	711	334	2154	6.00	6.75	D C 2 71	S							2500	2600	2700	2800	2900	3000	3100	3200	3300	3400	3500	3600	3700	3800									
	215/75 R 17.5			211	767	359	2339	6.00	6.75	D C 2 71	S								4800	4980	5160	5350	5530	5710	5900	6080	6260	6450	6630	6810	7000	7220								
	235/75 R 17.5		143/141J(144/144F)	233	797	368	2431	6.75	7.50	D C 2 71	S							2950	3060	3180	3300	3420	3540	3650	3770	3890	4010	4120	4240	4360										
	245/70 R 17.5			248	789	364	2406	7.50	6.75	D C 2 71	S								6950	7200	7460	7720	7970	8230	8490	8750	9010	9270	9520	9780	10040	10300	10640							
	245/70 R 19.5		141/140J	248	839	389	2559	7.50	6.75	C C 2 71	S								3590	3720	3850	3980	4110	4240	4370	4500	4630	4760	4890	5020	5150									
	265/70 R 19.5			262	867	401	2644	7.50	8.25	C C 2 71	S								3680	3830	3970	4120	4270	4410	4560	4710	4860	5010	5150	5300	5450									
			143/141J	262	867	401	2644	7.50	8.25	C C 2 71	S							6950	7230	7510	7790	8070	8350	8630	8910	9190	9470	10020	10300											

Note: The availability of products shown in this document may vary from country to country. Please consult your WESTLAKE distributor for local availability.
 Some tyres carry a second load/speed index marking which indicates additional operational possibilities.
 ⊙ = Fuel Efficiency Class ● = Wet Grip Class ◀ = External Rolling Noise Class and Measured Value dB = See page 22 for detailed information

This table shows the load capacity (kg) per axle at tyre pressure (kPa / bar / psi) for normal operation.
 Some vehicle operations require specialized inflation pressure.
 Please contact your WESTLAKE distributor for details.

REGROOVING PROCEDURE



Regrooved pattern is shown in black.
Recut depth listed is maximum value.
Recut width listed has ±1 mm tolerance

Long Run



WTL1

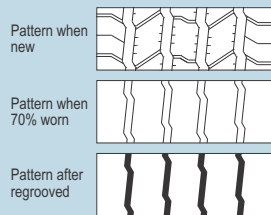


TYRE SIZE	DIMENSION OF REGROOVE	
	DEPTH (D)	WIDTH (W)
385/55 R 22.5	2.3mm	7.0mm
385/65 R 22.5	2.3mm	7.0mm

All Routes



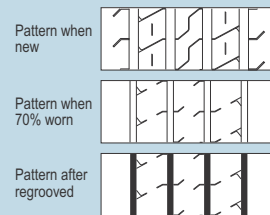
WSR+1



TYRE SIZE	DIMENSION OF REGROOVE	
	DEPTH (D)	WIDTH (W)
205/75 R 17.5	2.5mm	7.0mm
215/75 R 17.5	2.5mm	7.0mm
225/75 R 17.5	2.5mm	7.0mm
235/75 R 17.5	2.5mm	7.0mm
245/70 R 19.5	2.5mm	7.0mm
265/70 R 19.5	2.5mm	7.0mm



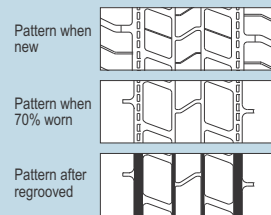
WSR1



TYRE SIZE	DIMENSION OF REGROOVE	
	DEPTH (D)	WIDTH (W)
295/80 R 22.5	2.3mm	7.0mm
315/70 R 22.5	2.3mm	7.0mm
315/80 R 22.5	2.3mm	7.0mm
385/65 R 22.5	2.3mm	7.0mm



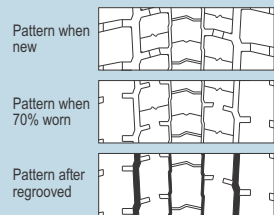
WDR+1



TYRE SIZE	DIMENSION OF REGROOVE	
	DEPTH (D)	WIDTH (W)
205/75 R 17.5	2.5mm	7.0mm
215/75 R 17.5	2.5mm	7.0mm
225/75 R 17.5	2.5mm	7.0mm
235/75 R 17.5	2.5mm	7.0mm
245/70 R 19.5	2.5mm	7.0mm
265/70 R 19.5	2.5mm	7.0mm



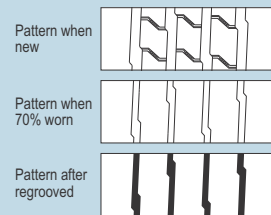
WDR1



TYRE SIZE	DIMENSION OF REGROOVE	
	DEPTH (D)	WIDTH (W)
315/70 R 22.5	2.5mm	7.0mm
295/80 R 22.5	2.5mm	7.0mm
315/80 R 22.5	2.5mm	7.0mm



WTR1

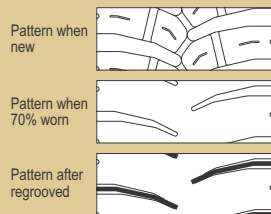


TYRE SIZE	DIMENSION OF REGROOVE	
	DEPTH (D)	WIDTH (W)
385/55 R 22.5	2.3mm	7.0mm
385/65 R 22.5	2.3mm	7.0mm

Mixed Terrain



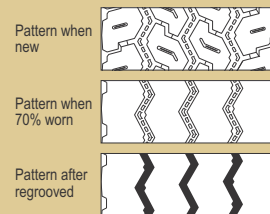
WDM1



TYRE SIZE	DIMENSION OF REGROOVE	
	DEPTH (D)	WIDTH (W)
295/80 R 22.5	3.0mm	7.0mm
315/80 R 22.5	3.0mm	7.0mm



WTM1

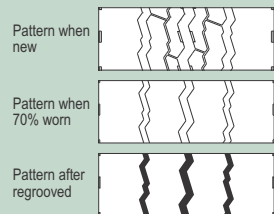


TYRE SIZE	DIMENSION OF REGROOVE	
	DEPTH (D)	WIDTH (W)
385/65 R 22.5	2.3mm	7.0mm

MaX Load



WTX1



TYRE SIZE	DIMENSION OF REGROOVE	
	DEPTH (D)	WIDTH (W)
205/65 R 17.5	2.5mm	7.0mm
215/75 R 17.5	2.5mm	7.0mm
235/75 R 17.5	2.5mm	7.0mm
245/70 R 17.5	2.5mm	7.0mm
245/70 R 19.5	2.5mm	7.0mm
265/70 R 19.5	2.5mm	7.0mm

TECHNICAL INFORMATION

Speed symbol

The speed symbol refers to the maximum speed capabilities of the tyre. It is only valid for tyres that are properly inflated and loaded within their assigned load index.

Speed symbol	Speed (km/h)
E	70
F	80
G	90
J	100
K	110
L	120
M	130

Load index

The load index is the maximum load-carrying capacity of a tyre under a specific condition.

LI	kg	LI	kg	LI	kg	LI	kg
115	1215	129	1850	143	2725	157	4125
116	1250	130	1900	144	2800	158	4250
117	1285	131	1950	145	2900	159	4375
118	1320	132	2000	146	3000	160	4500
119	1360	133	2060	147	3075	161	4625
120	1400	134	2120	148	3150	162	4750
121	1450	135	2180	149	3250	163	4875
122	1500	136	2240	150	3350	164	5000
123	1550	137	2300	151	3450	165	5150
124	1600	138	2360	152	3550	166	5300
125	1650	139	2430	153	3650	167	5450
126	1700	140	2500	154	3750	168	5600
127	1750	141	2575	155	3875	169	5800
128	1800	142	2650	156	4000	170	6000